



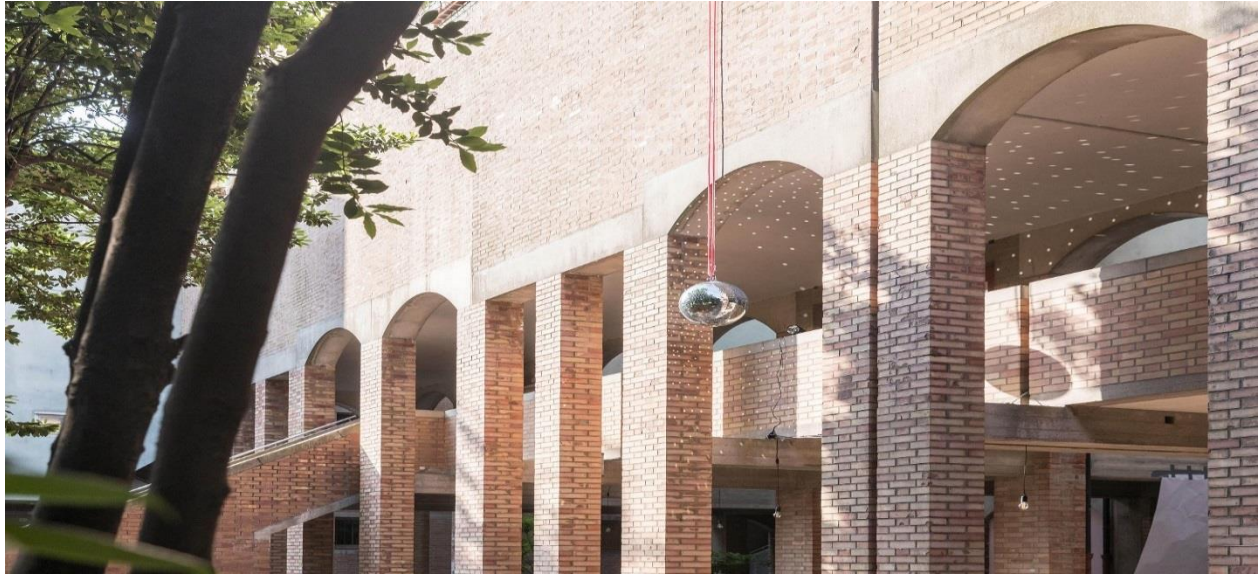
Critical Practice

Rethinking Clients, Forms of Alliance, Affording Risk
 A series of conversations with European practitioners who
 challenge the way we design today

Love Di Marco, Tobias Hentzer Dausgaard, Arya Arabshahi
 London, United Kingdom

Architects have seen the status and autonomy of the profession diminish from the 20th century to the 21st. While they used to hold key positions at the table of urban policy-making and design, their voices seem to be less significant in the chain of decision making today. How can we explore new modes of practicing by transforming our relationships with our clients, expanding our collaborative models and challenging our assumptions around risk-taking, while raising awareness around vital social and environmental urgencies?

The series is a call to reimagine the relationships between the profession and the network of actors and conditions that surround it. Together with architects, planners and economists we would like to have an open conversation about common questions and exemplar initiatives. We unfold three themes that we think have the potential to redefine the future role of the architect: rethinking clients, forms of alliance and affording risk.



Unfolding Pavilion

A curatorial project that unfolds unexpected architectures
Guerrilla curating as a way to question the relationship between
architecture, society and the city.

Daniel Tudor Munteanu, Davide Tommaso Ferrando, Sara Favargiotti. With Ana Victoria Munteanu, Eliza Rabiniuc Mocanu, Magda Vieriu, Octavian Hrebenciuc
Trento, Italy

The Unfolding Pavilion is an exhibition project featuring each time a different theme inspired by the space it occupies, by means of commissioned works that react to it and to its wider cultural background. The occupied space is never a gallery, but a building of outstanding architectural value, whose manifold relationship with its context is brought to the fore by the project. The Unfolding Pavilion questions traditional notions of what architectural exhibitions should do. By existing at the same inside and outside the institutional frame of the Biennale, it criticizes the expensive vanity fair that gravitates around it, while recognizing its importance for the production of architectural knowledge. By acting inside of the social fabric, it raises the issue of the political agency of cultural production. By intersecting different disciplines, the Unfolding Pavilion blurs the boundaries between architecture, exhibition and performance, suggesting alternative ways to act in the city.

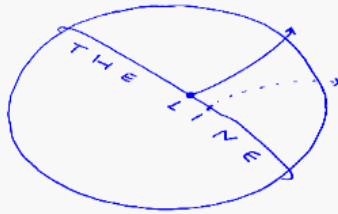


Ways of Treating Buildings In Order to See Them

How can architecture help activate spaces, history, and communities through a variety of formats, programs, planning, and cultural production infiltration?

Agustin Schang
Brooklyn, United States of America

In 1974, George Maciunas, the Fluxus' founder, helped a group of artists acquire the 537 Broadway building in New York. The site became a base for an artists' community that worked outside the conventional borders of the art system. A compact space was created for the Fluxus diaspora, a site for experiments, where music, poetry, video and performance can still be seen and heard today. Using cultural infiltration this project explores a unique site and the events that took place in it. The blurred division between art and life, the impossible permanence of certain artistic works in designated spaces, early experimental events –all of these were considered as the departure point to examine the multiple overlapping at 537 Broadway. 'Ways of Treating...' focuses on different archival, caring, and affection readings. Numerous tools for biographical, archeological, public, and personal provocations helped understand how a dormant building could be activated for a liminal interval of time.



Institute for linear Research

Walking around the Globe

An open platform researching contemporary landscapes by
walking on a straight line around the globe

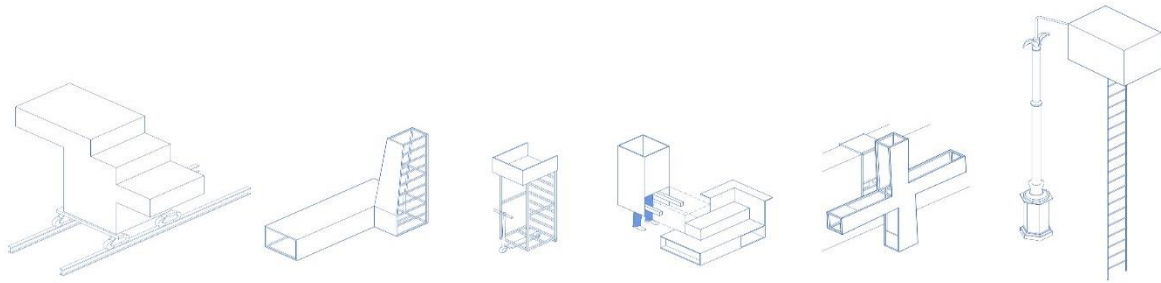
Matilde Igual Capdevila (Spain) and Luis Hilti (Liechtenstein)
Triesen, Liechtenstein

Contemporary landscapes are the stage on which our societies unfold. They are a lever for change and as such demand a persistent engagement. Relying on outworn dichotomies (city and countryside, urban and rural, center and periphery) doesn't do justice to the rapid transformations in shape, meaning and inner workings of today's landscapes.

The Institute will focus on particular geography defined by an arbitrary straight line traced around the globe. The research will be conducted by walking on The Line.

The Institute aims to create a platform for researching The Line allowing exchange across fields of knowledge.

Walking allows engagement with the landscape that is unpolluted by outmoded theories or preconceived hierarchies of what is important. The Institute for Linear Research sees itself in the tradition of Lucius Burckhart in understanding strolling as a method of carefully directing our attention towards spaces as they are and imagine how they could be.



Manifesto for unexpected architectures

On-going project-Manifesto which explores micro-architecture
dialectical contingency.

Micro architecture projects which explore alternative time-
space relationships

Diego Sologuren, Brad Downey
Lausanne, Switzerland

Architecture, understood as a relational and dialectical product, is a potential agent of resignification. It is an appropriate tool to exert a critical resistance towards the powers of structure, standardization and the generic city. This resistance, implemented through the awareness of the temporary, the accident, the surprise, is manifested in the form of unexpected architectures.

Unexpected architectures emerge in the contingency and provoke challenging relationships with body and space. They are temporary devices, with a transversal dimension, an imprecise function and an open meaning. They imply a radical divergence in the way the urban is experienced.

Unexpected architectures anticipate a future of minor architecture: they unveil an imaginary, where spontaneity, a-legality, dystopia, degrowth, marginality, collective intelligence and citizen empowerment can coexist.



[The Distributed Cooperative](#)

Our project reimagines how a mixed-use cooperative housing development could be conceived at a neighborhood scale.

Scott Lloyd, Alexis Kalagas, Nemanja Zimonjic
Australia

Addressing the challenge of scaling non-speculative housing models, our project reimagines how a mixed-use cooperative housing development could be conceived at a neighborhood scale. The project proposes a strategy to network a series of interventions on odd lots in Zürich into a ‘distributed cooperative’, bypassing the need for large sites favored by commercial developers. Unlocking unrealized potential through digital planning tools, the strategy is based on the ‘extended home’: disaggregating and dispersing the shared amenities found in a single development across a cluster of smaller mixed-use buildings within a comfortable walking distance. From communal kitchens to wellness retreats, the domestic footprint is increased via access to a network of high quality common spaces. These programs are underpinned by a digital platform to manage their collective use. The project explores an updated model of sustainable shared living for the human-centered ‘smart city’ of the future.



[An Anticipatory Theory of Ruin Ecology](#)

Building Future Ruins For Endangered Species to Thrive
In an age where ruined buildings are becoming unlikely refuges for endangered species, architects should begin designing buildings with an eye towards their future existence as hotspots for biodiversity.

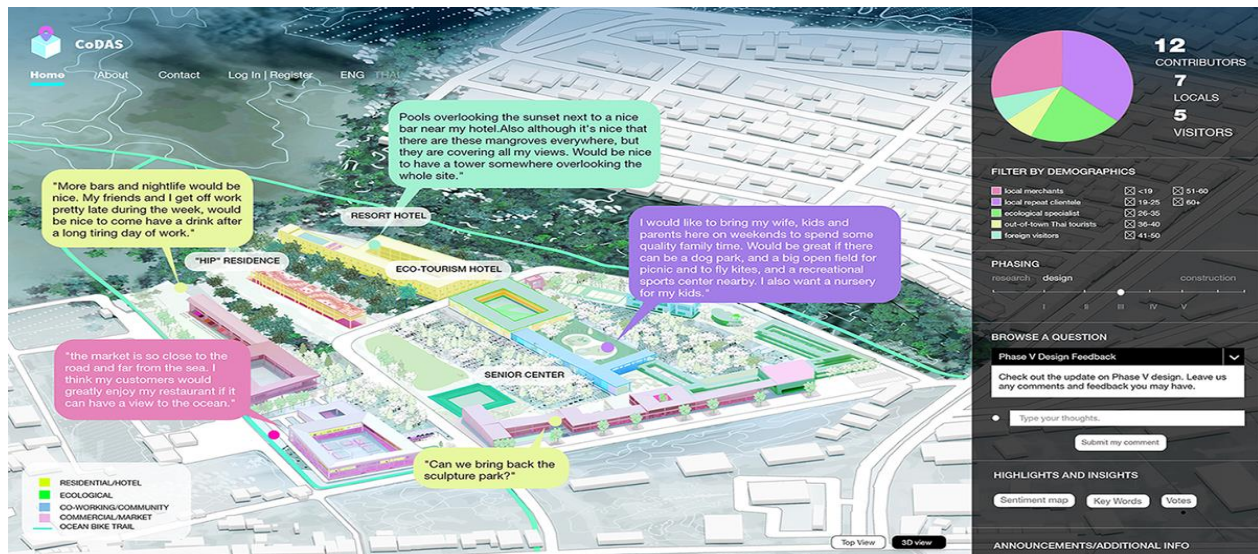
Jason Rhys Parry
Indiana, United States of America

Human ruins are forming an unlikely refuge for endangered species. Rare mollusks thrive amidst the keeps of Czech castles. Birds and reptiles thought to be extinct live on in the ruins of the Lost City of the Monkey God. Endangered bats rest in the crumbling remains of military bunkers.

In response to migration and climate change, "An Anticipatory Theory of Ruin Ecology" proposes that architects begin to study their buildings' afterlives as potential future homes for nonhuman species.

Corners can create enticing microclimates. Balconies could be designed to harbor rare plants or nests. By studying the coincidences that have made ruins such attractive homes for nonhuman forms of life, it might be possible to intentionally produce these features.

Instead of the "theory of ruin value" championed by the Nazi architect Albert Speer, who sought to create ruins that would glorify their builders, this approach insists on buildings that acknowledge the transience of human civilizations.



Collective Intelligence in City Design

Co-Design Ang Sila

An open-sourced citizen engagement platform for the practice of architectural and urban design

Helena Rong, Juncheng Yang
Cambridge, United States of America

We propose an interactive design engagement platform which facilitates a continuous conversation between developers, designers and end users from pre-design and planning phases all the way to post-occupancy, adopting a citizen-centric and inclusive-oriented approach which would stimulate trust-building and invite active participation from end users from different age, ethnicity, social and economic background to participate in the design and development process. We aim to explore how collective intelligence through citizen engagement could be enabled by data to allow new collectives to emerge, confronting design as an iterative process involving scalable cooperation of different actors. As a result, design is a collaborative and conscious practice not born out of a single mastermind of the architect. Rather, its agency is reinforced by a cooperative ideal involving institutions, enterprises and single individuals alike enabled by data science.



From dismissed building to open spaces

Storytelling and tactical urbanism to suggest new forms of
living abandoned spaces

A methodological approach to experiment new ideas and new
images for the abandoned buildings.

Silvia Tagliazucchi, Federica Rocchi, Meike Clarelli, Sara Garagnani, Serena Terranova, Gabriele Dalla Barba, Isabella Bordoni, Antonino Giunta
Modena, Italy

Experimenting with new approaches through the creation of site-specific artistic and architectural projects to find new meanings for abandoned urban areas.

The temporary activation of abandoned places has in itself the concept of taking care of, exploring and experimenting with new uses, going beyond the functions of the past and creating new imagery.

The triggering of such experimentation leads to new relationships with the territory, conceiving these interventions as generative in social, relational and potential activators of new projects involving the community and all the dimensions of a city.

The generative and social value of this approach leads to a new idea of project: a temporary project that isn't self-conclusive, but generative of new perspectives of growth and comparison, an activating process of new potentialities. The experimentation has therefore the temporality, always in continuity with an organic idea and continuity thanks to the methodological approach developed.



Mies. TV: Architecture Backstage

Video Documentaries of Architecture Behind the Scenes
Sharing stories from the world of architecture, reaching people
within and beyond the common discourse.

Arian Lehner, Dominik Kastner, Paula Brücke, Bernhard Mayer, Theresa Margraf, Chiara Desbordes
Vienna, Austria

Mies. TV is a global network of young people at the intersection of architecture and video. The documentaries focus on current themes which challenge the architecture profession and its environment. People of the architecture realm tell their stories on current issues, such as the question of beauty, housing or the architecture profession itself. At international screenings the collective tries to not only share those stories with other architects but especially with interested people that are not from the architecture field themselves. Stories of raising issues in architecture can be told in a new way through the media of video which enables complex content to be understood more easily.

The recent documentaries of Mies. TV are listed below, which can be shared and further developed within the Future Architecture Platform network.



Recycling Utopia

Exploring (im)possible futures of Socialist mass housing
Urban speculation on the phenomenon of Socialist mass
housing in Lithuania

Goda Verikaite

Rosier Faassenstraat, Rotterdam, Netherlands

This research focuses on the phenomenon of Socialist mass housing in Lithuania, which was the physical outcome of Utopian promise to provide every Soviet family with its own apartment. In the 1990s, Lithuania underwent radical changes in the wake of its transformation from a Soviet communist system into a democratic and independent state. However, the Soviet mass housing neighbourhoods remained unchanging relics of what had been built sixty years earlier. What is the next step for these prefabricated house-machines?

The project aims to explore possible/impossible futures, by embracing speculation as a method and employing different techniques, such as: modelling, mapping, collaging images and videos, and publishing fictional newspapers. This methodology is relevant not only for the Lithuanian context, but also for the entire former East Bloc countries, allowing to

explore different layers of future narratives and offer more challenging ways of looking at the existing urban setting.



ACAN

Architects Climate Action Network

ACAN is a network of individuals within architecture who are taking action to address climate and ecological breakdown.

Sarah Broadstock
London, United Kingdom

The profession is not responding quickly enough to the climate emergency. As a network of individuals, ACAN directs personal expertise and efforts towards systemic change in architecture and the wider construction industry. ACAN operates without commercial affiliations, allowing us to act at pace and without conflicts of interest.

ACAN's aims:

Rapid decarbonisation of the built environment through the transformation of the regulatory, economic and cultural system in which it is made, operated and renewed.

Ecological regeneration, through the immediate adoption of regenerative & ecological principles in order to promote the recovery and restoration of natural ecosystems.

Cultural transformation of the profession, by challenging and redefining the value systems at the heart of the industry and its educational system.

Through collective action and targeted campaigns, ACAN is working to demand, instigate and propagate the urgent transformation of the industry.



Apartment Biographies: a travelogue; a book; an architectural (hi)story.

The tale of the everyday life of the post-Yugoslav cities and socialist modern mass housing narrated through the eyes of the privatised and self-modified apartments.

Intimate residing experiences: notes on social upheaval, freedom, power and demographic change.

Sonja Lakić
Banja Luka, Bosnia and Herzegovina

In the last three decades, hundreds of thousands of individuals contested the original architectural design of modernist mass housing objects across the former Yugoslavia by self-modifying their dwellings and illegally glazing their balconies.

“Apartment Biographies” visits the lives of these rebel residents and describes the contemporary intimate rituals of converting housing into a home. These individual residential portraits bring to light the perplexed love affair between people and dwellings, contemporary morals and ethics and new housing typologies. This is a thought-provoking story that defends housing as home, dwells on the future role of architects and stands for an innovative multi-disciplinary research method.

“Apartment Biographies” serves as a gentle reminder that, even in the most turbulent times, one is entitled to dream: everyone is an architect of our own destiny, even when the good life of ours comes in a form of a glazed balcony.



Architecture of Shame

a collective psychoanalytic session for European architecture
Architecture of Shame investigates relationships between
architecture and shame as a tool to understand contemporary
European identities from a bottom up perspective

Fabio Ciaravella, Cristina Amenta, Mimi Coviello, Clara Cibrario Assereto
Matera, Italy

AoS uses the relationship between Architecture and Shame to trigger a productive dialogue about which part of our identities is reflected in the built space and in the way we look at it.

The starting cultural filter is the story of Matera (IT) called Shame of Italy in 1950 and recognized a World Heritage in 1993.

This radical change occurred thanks to a cultural evolution.

By using shame as a tool we want to question a "negative feeling": should we be ashamed by some architectures, places, cities or should we re-consider their qualities? Are we feeling ashamed enough by those architectures that shows embarrassing sides of our culture?

In between of these questions we can investigate architecture as the place of social intimacy and public values, we can use architectures as a way to talk about unresolved questions of our public life and civic engagement.



Biblioteca Abierta (Free library)

Building without walls

This project aims to create libraries without buildings, just through the performative action of build.

Miguel Braceli

Baltimore, MD, United States of America

Biblioteca Abierta (Free library) seeks to reprogram public space, transforming places into libraries built without walls. Thousands of books are available on the floor that people can take freely. It is a work that changes with the action of the viewer and is transformed according to its disappearance. This work aims to create spaces for gather people through the exchange of books. Taking these texts abroad is an invitation to knowledge and citizen participation, developing new dialogues within the public space. The objective of this project is to program public space in segregated areas of the cities, making this intervention a replicable strategy in multiple places around the world. Its simplicity is the key to generate systematic changes.



Diasporic Ties

Understanding the city and the diaspora

An investigation of the spatial manifestations of the ties of the diaspora with the city of Pristina.

Grégoire Deberdt
Paris, France

While a lot of research has been done on how the diaspora can transform fragments of the city they live in, few has been investigated on the spatial manifestations of their ties with their departure city. In the European territory, the case of Prishtina is complex and radical, as a constant flow of remittances from the diaspora irrigates its economy and thereby its real estate and construction sectors. While standing in a position of openness and un-dogmatism, the observation of the urban evolution from post-conflictual informal constructions to the new unbridled residential developments raises environmental, social and economic issues. The Diasporic Ties project gathers a work of interview recordings, mapping and photo reports, identifying precise situations and their evolutions. Thereby the project wishes to create a new source of thoughts and debate within and beyond Kosovo, and to initiate new narratives crossing the territorial policies and the architectural disciplines.



Drowned in Neretva River

Nature Destruction and Inter-Species Alliances

Exploring spatial, ecological, political and material formations of post-war landscape system of the Neretva river

Armina Pilav, Damir Ugljen, Jonas Langbein
Mostar, Bosnia and Herzegovina

Violent transformation of Mostar and Neretva started during the war in Bosnia (1992-1996). Historically, the city has been developed along the river, connected with nine bridges (Image 1) that with river banks before the war where important spaces of sociality. As the consequence of the war bridges destruction, construction of temporary war bridges that embodied traumas from inhabitants' survival strategies (Image 2), Neretva and her organic system changed in environmental terms but also in its spatial and social role. In the wartime, the river ecosystem started to deposit anorganic materials, pieces of exploded bombs, remnants of temporary bridges and other debris. Since then, the river natural ecosystem is in constant becoming introducing hybrid spaces and species that today are underrepresented. Our idea is to "think with" Neretva and through narratives on architecture, nature, mapping, underwater archeology, represent her hybrid condition in Bosnia and internationally.



Future Histories

Our Current Situations & Responses, Through Time, Hindsight
& Imagination

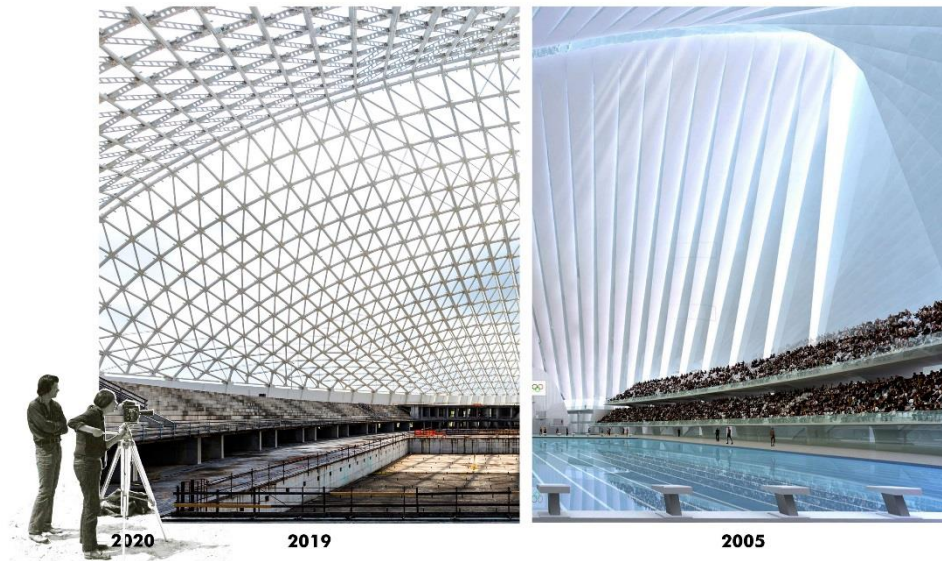
A series of occasionally intersecting future histories, looking back at where it all went right / all went wrong / all could have been different, using the work of six emergent creatives to explore our current near-future through the lens of environment, social cohesivity and urgency of response.

Will Jennings
London, United Kingdom

Humanity faces a critical period. Twin threats of authoritarianism & climate breakdown will change our coming decades. Architecture alone can't fight these threats, but it will be partner to all responsive strategies, & whatever the outcome of the growing struggles it will be central to the new world emergent on the other side - however that world is shaped, & who it is shaped for.

As an application for the callout for short story responses to Future Architecture Creative Exchange design ideas, my proposal consists of a series of written future histories, each from possible future worlds formed from the ongoing climate and political fights.

These future histories may be long or short, utopian or dystopian, personal or collective, pivoting around ideas evident in selected Creative Exchange projects. As warnings & callings from unknown futures, they are rippling mirages from increasing heat, textual fragments to consider the now and next.



Learning from Films

For an alternative mapping method
Engaging architects in filmmaking practices to deal with
complex urban realities

Renzo Sgolacchia
Rotterdam, Netherlands

In his article “The Monuments of Passaic,” Robert Smithson refers to “ruins in reverse” to describe “new constructions that would eventually be built.” According to him a “ruin in reverse” is “the opposite of the romantic ruin because the buildings don’t fall into ruin after they are built but rather rise into ruin before they are built.”

In order to deal with these forgotten urban realities, the proposal focuses on new modes of perceiving, representing, and conceiving architecture through the visual experience of filmmaking. The aim is to specifically analyse abandoned sites and unfinished architectures in an exploratory way. Rome is an emblematic case study. The city is characterised by one of the largest urban areas in Europe and by the wide presence of buildings of which the implementation or renovation has never been completed. Rather than romantically represent vacant buildings, the filmic mapping gives insights that are crucial to influence future strategies.



Poetics for the Uncertain

Reconsidering the mediums

From Aristotle's Poetics to Nicolas Bourriaud's "relational aesthetics", the Architectural image and the act of drawing as a process can create a threshold between the "real" and the "imaginary" in which knowledge, interaction and problematics of a specific context, play an important role.

Constantinos Marcou
Larnaca, Cyprus

While Architecture lacks the means to address and understand the urban, the act of drawing has become another issue of great concern, often understood as a tool, separated from the process of creating. Images appear within a generalized or not context of human cohabitation in which Architecture plays the key role. As a medium for "representation", it reduced itself to a projection of what already exists, rather than understanding the alternative qualities and possibilities that could occur and the parallel relationship of engaging with the viewer. The act of drawing as a process can create a threshold between the "real" and the "imaginary" in which knowledge and problematics of a specific context, play an important role. As the future becomes more uncertain, the image can manifest as an important narrative within a specific framework. Abstracted from tradition, it can become an instrument for problematization, questioning the category of the urban.



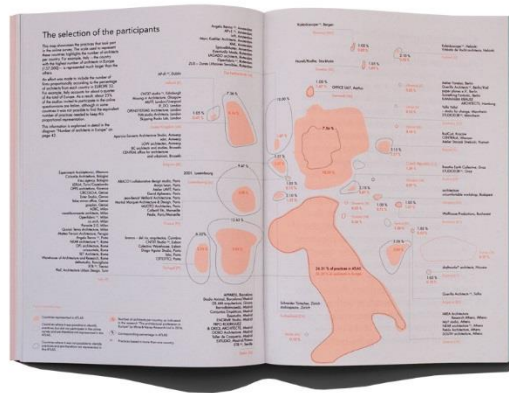
Agro Commune

Global Floriculture Network in Lake Naivasha, Kenya
An agro-industrial prototype imagines the post-capitalist future
for smallholder farmers

Stephanie Kyuyoung Lee
New York, United States of America

Foreign corporations are vehemently irrigating rural corners of sub-Saharan Africa, displacing local smallholders from their land to secure stable supplies for the rest of the world. Following the global food crisis of 2007-2008, there has been an exponential amount of large-scale land acquisition in Africa. Foreign “land grabs” are redrawing the global map of farmland ownership as foreign direct investments continue the legacy of colonization. Western, Chinese, and Middle Eastern companies are leading a 21st-century land rush in African farmland where more than a hundred million acres are under a 99-year lease. Greenhouse colonies have become architectural representations of these unequal exchanges fostered by global capitalism.

The five scroll mural (included in work samples) highlights systems of rural development and ecological resilience. The visual mural detailed phases of geographical expansion, connecting local farmers to a larger co-operative base.



Atlas of emerging practices

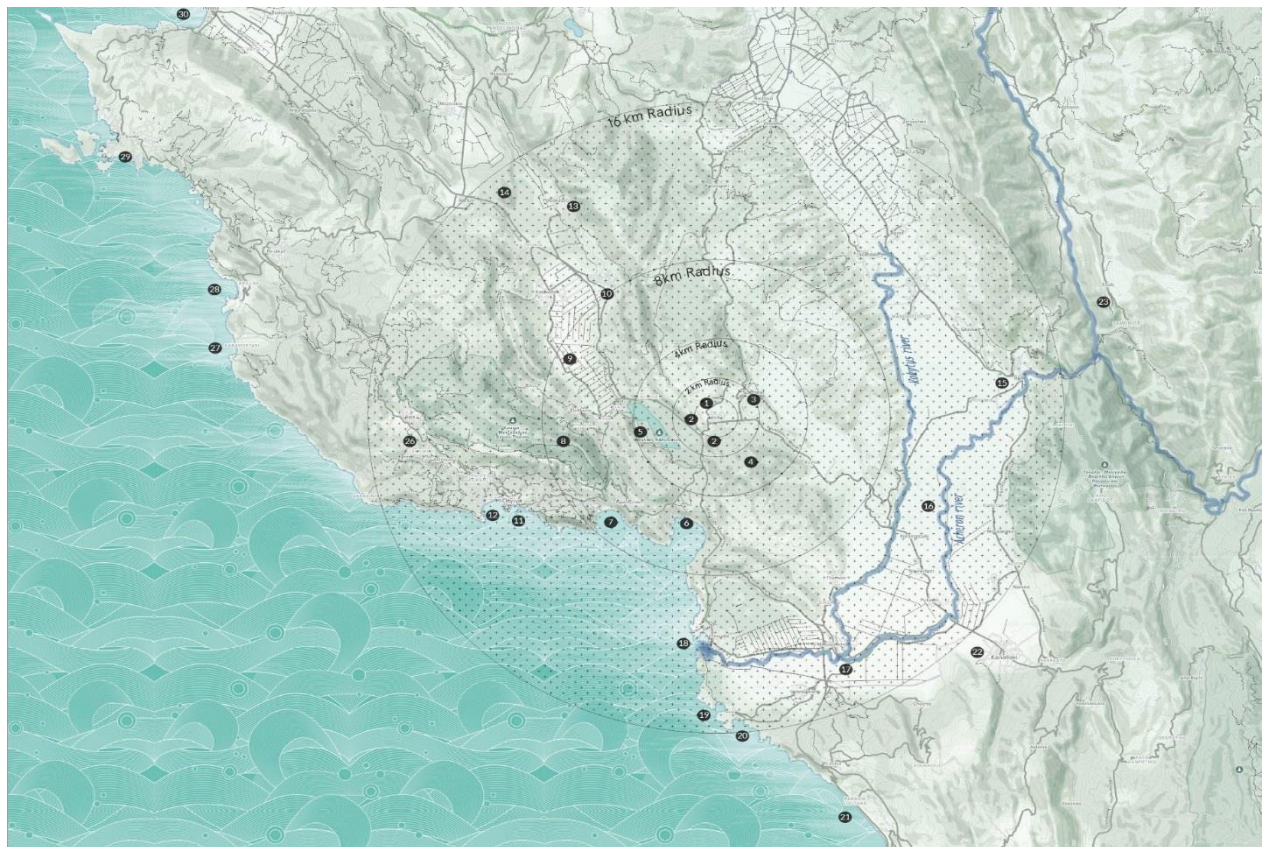
being an architect in the 21st century

ATLAS of emerging practices is a project by Itinernat Office, that analyses the work of a selection about 100 emerging architects from more than 20 EU countries.

Gianpiero Venturini
Madrid, Spain

ATLAS gathers the work of a selection of 95 emerging practices in Europe, with the aim of providing useful tools and insight for architecture students, new graduates, and emerging practices in the early stages of their careers.

The disruptive effect of the 2008 economic crisis, accompanied by the political, social, and technological changes that have emerged in the new millennium, has radically influenced the society we live in today. The economic crisis has challenged the entire system and caused a devastating and irreversible impact on the profession, leading to a drastic contrast between the pre- and the post-crisis situation in the industry. Regardless of which generation we belong to, this new context represents an actuality that we must confront—a point of no return that reshuffles the cards—a set of redefined hierarchies and roles, as well as the introduction of new forms of work. Through its research, New Generations attempts to explore these new conditions.



Mapping the Margins

An atlas of rural commons in Northern Greece

Christina Serifi | Zuloark
Morfi, Thesprotias, Greece

“Mapping the margins” is a series of maps and documentations, identifying, for the first time, all the women associations, local agriculture cooperatives as well as abandoned buildings in Thesprotia regional unit in Greece, in order to create an active platform where many cooperatives can find a space to grow. Through these rural commons, we aim to merge formal, non-formal and informal learning models and create encounters with artists, local institutions and inhabitants from and for the region.



pais(vi)agem

Tourism for landscapes

Tourism as a booster for both natural and urban landscapes regeneration: are we dreaming?

Enrico Porfido · Claudia Sani
pais(vi)agem

Pais(vi)agem was born in south Brazil during a field trip in an amazing site. A small but motivated local community surrounded by a dramatic nature, threatened by a pressing reality: a multinational corporation which wanted to build an industrial complex.

Local community played a central role in stopping the process. And this is what we wanted to work on: territorial self-awareness. Only knowing what surrounds us, we can protect it. Tourism becomes a tool for territorial exploration and a way to enforce local communities.

Mapping the territorial potential - enriched with tourism design projects and strategies - allows us to evaluate risks and opportunities of that specific area. Because there is no tourism without landscapes, but also landscapes need an economic support.

Pais(vi)agem aims to design an innovative analytic tool for monitoring the tourism impact on local ecosystems and to export worldwide a new territorial development model based on tourism-landscape.



The Wanderer

A story about becoming
an entity travels the world of ideas and takes shape, changes
appearance according to the places “it” spends time in

Monique Besten
Netherlands

The traveller was born out of words. When they* came into being they didn't have clear features yet. The traveller wasn't male or female, old or young. They seemed to be human. They tried to find out what that means. The traveller was born in a time when more people than ever are on the move, for pleasure, for safety, for work. Looking for a place to live, spend time, be. The traveller didn't know why they were travelling. It is how they found out what the world is like, can be like, should be like. The traveller was born out of urgency. That was the first word. Before they headed off, they packed some other words. Airplane. Feet. Time machine. Horse. Road. Internet. River. Temple. Forest. Shelter. Exterior. City. In the beginning there were ideas. They were dwelling places. The traveller spent time in all of them, slowly growing, changing, becoming. Moving from one to the other, mirroring them, absorbing them. They became a map. A map for the future.

* they = gender neutral